

CONTENTS

<u>Page</u>	
2 - 3	Village Plan Process
4	Aims of the Village Plan
5 – 6	Hutton past and present
7	Summary of consultation results:
8 - 9	Living in Hutton (Health, Communications, Shopping and Leisure)
10 –11	Environment and planning
12	Housing
13	Crime, anti-social behaviour and emergency services
14 - 16	Traffic
17 - 20	Action Plan
21	Acknowledgements

THE VILLAGE (PARISH) PLAN PROCESS

In 2000 the Government published a Rural White Paper, 'Our Countryside – the Future'. In it they proposed the introduction of Parish Plans, the aim of which was to 'identify key facilities and services, set out the problems that need to be tackled and demonstrate how distinctive characters and features of rural areas can be preserved'.

The following year the Countryside Agency's 'Vital Villages' programme set out how the Department for Agriculture and Rural Affairs (Defra), would implement the White Paper. The programme included financial assistance for Parishes wishing to produce Parish Plans.

The Minister for Rural Affairs advised that Parish Plans could provide blueprints for the future survival of rural communities and that the Countryside Agency wanted local communities to take more control of their lives; to say what they want doing in their own neighbourhood and to work with others to get it done. The aim was to gather evidence to provide information for the policy makers of a large number of organisations such as the Parish, District and County Councils, including the local planning authority, police and health service.

During 2005 Hutton Parish Council discussed and researched in detail the possibility of a 'Village Plan for Hutton'. A proposal was submitted to 'Community Futures', the organisation overseeing the project, and a grant was awarded to assist in its production. Small grants were also received from South Ribble Borough Council and Hutton Parish Council.

As a result, on the 20th February 2006, the Parish Council resolved to establish a Parish Plan Steering Group to research and organise the project over the coming year. This Group, whilst working closely with the Parish Council and having two Parish Councillors and the Parish Clerk as members, was to be independent from the Parish Council.

At a meeting on the 27th February 2006, a Steering Group was appointed and immediately set about recruiting volunteers to assist in the project. The aim was to collect the views of the whole community, to cater for the needs and desires in the village for the next 5 to 10 years. Issues considered would be social, economic and environmental matters of relevance to local people. It was considered essential to establish how key facilities and services should develop and give residents an opportunity to guide the future development of the village.

In April 2006 a questionnaire was distributed to all households within the Parish. A 27% return was obtained (from 239 households), which is regarded as good for this type of consultation process. Computer analysis of the results later enabled detailed interpretation to be undertaken for the preparation of this report.

At the Village Hall 'May Day Fete', on the 1st May 2006, a 'Village Plan' stall and exhibition was manned and was well attended.

During the year updates were provided via the Parish Council newsletter "Hutton News" and villagers were asked to advise the Steering Group of any further concerns and suggestions.

On the 21st October 2006, a Social Evening, and an up to date briefing on the current situation was held in Hutton Village Hall. It was a 'full house' and during the evening valuable additional further suggestions were received.

In the course of researching the requirements of the village, contact was also made with various organisations and services: police, fire, ambulance, the health service providers, local businesses and voluntary organisations.

The Steering Group have considered all of the responses and have written this report and recommendations for further actions to be led and kept under review by the Parish Council.



Exhibition stalls at a windy May Day Fete

AIMS OF THE VILLAGE PLAN

The Village Plan is a document that: -

- Identifies local problems and opportunities
- Sets out an achievable and long term vision for the future of Hutton
- Presents an action plan to achieve this vision

The Village Plan aims to: -

- Encourage community participation
- Influence service providers
- Provide information for setting local planning strategies
- Help access funding by providing evidence of need
- Present a milestone document for Hutton in 2007

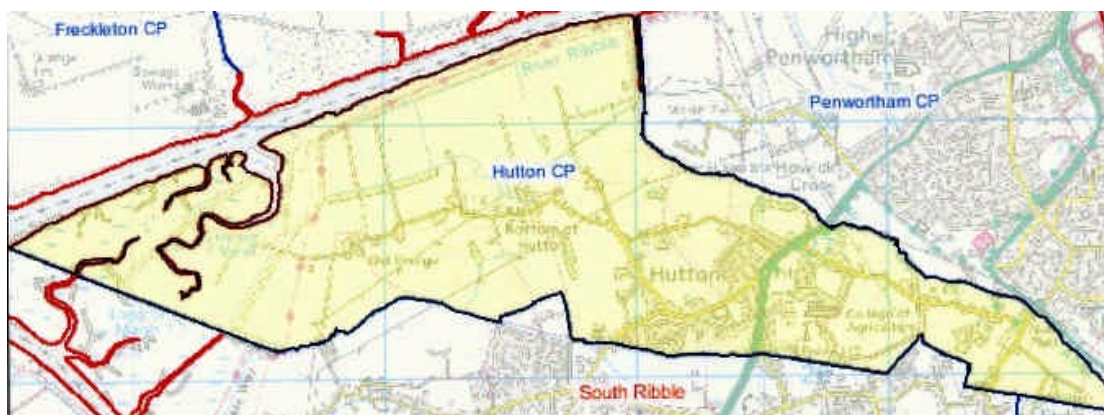
THE VILLAGE OF HUTTON - 1150 TO 2007 AD

The name 'Hutton' is derived from the old English word 'Hoh Tun', meaning 'a settlement on a spur of land'. Research has indicated that there is good reason to believe that there was a settlement in Hutton five thousand years ago.

There is no record of Hutton in the Domesday Survey of 1086, no doubt due to it at that time being only a very small group of cottages. The first known record of note was in 1150 A.D. when a landowner, Orme-de-Hutton, is recorded as owning a large portion of what was then known as the 'Estates of Hutton'.

In the 13th Century, as a consequence of grateful landowners giving large areas of Hutton to Cokersands Abbey, Hutton had strong connections with the Abbey.

By the Civil Wars of 1642-46 and 1648-49, the 'Hutton Estate and Manor' was in the ownership of the Rawstrone family, which was headed by a leading North of England Loyalist and supporter of King Charles I. The Rawstrones were a divided family; some supporting and fighting for the King, and some for Parliament. The result was a divided village, as brother fought brother. This division of loyalties eventually proved beneficial in that after the wars the estate remained in the ownership of the Rawstrone family!



Throughout the 18th and 19th centuries, when prior to the reclamation of the River Ribble Estuary and the improvement of the marshes the tide regularly reached the Bottom of Hutton and Old Grange, fishing on the Ribble was a small but thriving industry. This, together with labouring on farms, domestic work for the gentry, and Cottage industries such as weaving and garden produce, provided the main source of income for many of Hutton's residents.

In 1746, Hutton Grammar School moved from Longton to its present site in Hutton. The existing building was constructed in 1931.

From 1500, to the 1800's, Hutton was connected to Lea and the Fylde coast by a ford across the River Ribble, close to Dungeon Farm, on Skip Lane. The first regular direct stage coach service between Preston and Liverpool, which passed through Hutton, commenced in 1774.

The first National Census in 1801 shows Hutton with a population of 462, comprised of 90 families. By 1851, 208 children under 15 years of age lived in the village.

The 1845 Ordnance Survey Map shows the village mainly centred on Liverpool Road between the Anchor Inn and Skip Lane, and off Moor Lane and Skip Lane. On the 1st January 1895, Hutton residents elected their first Parish Council.

The construction of the railway in 1882, connecting Preston to Southport and Liverpool, and the opening of a railway station in Chapel Lane, New Longton, placed Hutton firmly on the map. From 1897 to 1934 it was known as 'Hutton and Howick Station'. Regrettably the line closed in 1964, and the station and land were sold.

The breaking up, and commencement of the sale of the Hutton Estate in 1915 was the start of significant change for the village as much of the area was earmarked for housing development. Housing projects commenced after the 1st World War, when in 1924 Tolsey Drive was developed. This was followed by Anchor Drive and Stanley Avenue and the 'infilling' of several plots on Liverpool Road. Birchwood Avenue followed in the late 1930s and the 'Anchor' and the 'Stiles Avenue' housing estates were built in the 1970s.

The late 1930s saw the commencement of the construction of the Lancashire Constabulary Headquarters, within the site of 'Hutton Hall', and its grounds, also the purchase for the Constabulary of 'Home Mead House' and its grounds, and 'Moor Farm', both off Lindle Lane. Following the 2nd World War, the Force Headquarters was increased in size on a number of occasions. There was also the building of a large housing complex for occupation by police officers, the 'Lindle Estate', and other smaller groups of police houses throughout the village. Now most of those houses are in private ownership.



The population of Hutton in the 1971 Census is recorded as 2,850 persons. By 2001 it was shown as having dropped to 2,073 persons. This was partly due to boundary changes, the loss of the residential students and staff at the Agricultural College, and the conversion of police houses to offices at the police headquarters. However, in recent years new developments have taken place. The former County Agricultural 'Myerscough College', off Lindle Lane, is now a major housing complex of 90 houses, 'Thornton Grange'. Further smaller housing developments have also occurred on Liverpool Road and on Moor Lane. It is estimated that the village population today is approximately 2,350.

Facilities for residents of the village today are partly within the parish and also in adjacent areas. Infant and junior schools are located at Howick Cross, Longton, New Longton and Ashbridge Independent School in the parish. Hutton Grammar School, centrally located within the village, provides secondary and 6th form education and is currently undergoing a major modernisation programme. Other secondary schools are located in Penwortham and 6th form colleges are at Leyland and Preston.



Hutton Village Hall has since 1986 provided a central focus for many activities in the village. It is a popular venue for regular meetings of many groups and for private and public events. A recreation ground (providing a football pitch, a children's playground and a private tennis club) and the village pond are well-used facilities adjacent to the hall. Other sports facilities are available at the grammar school together with a new private tennis club (open to subscription) at Thornton Grange.

There are a number of shops (including a post office) and businesses within the village. Larger shopping centres at Longton and Penwortham, both within two miles, also have health centres and churches.

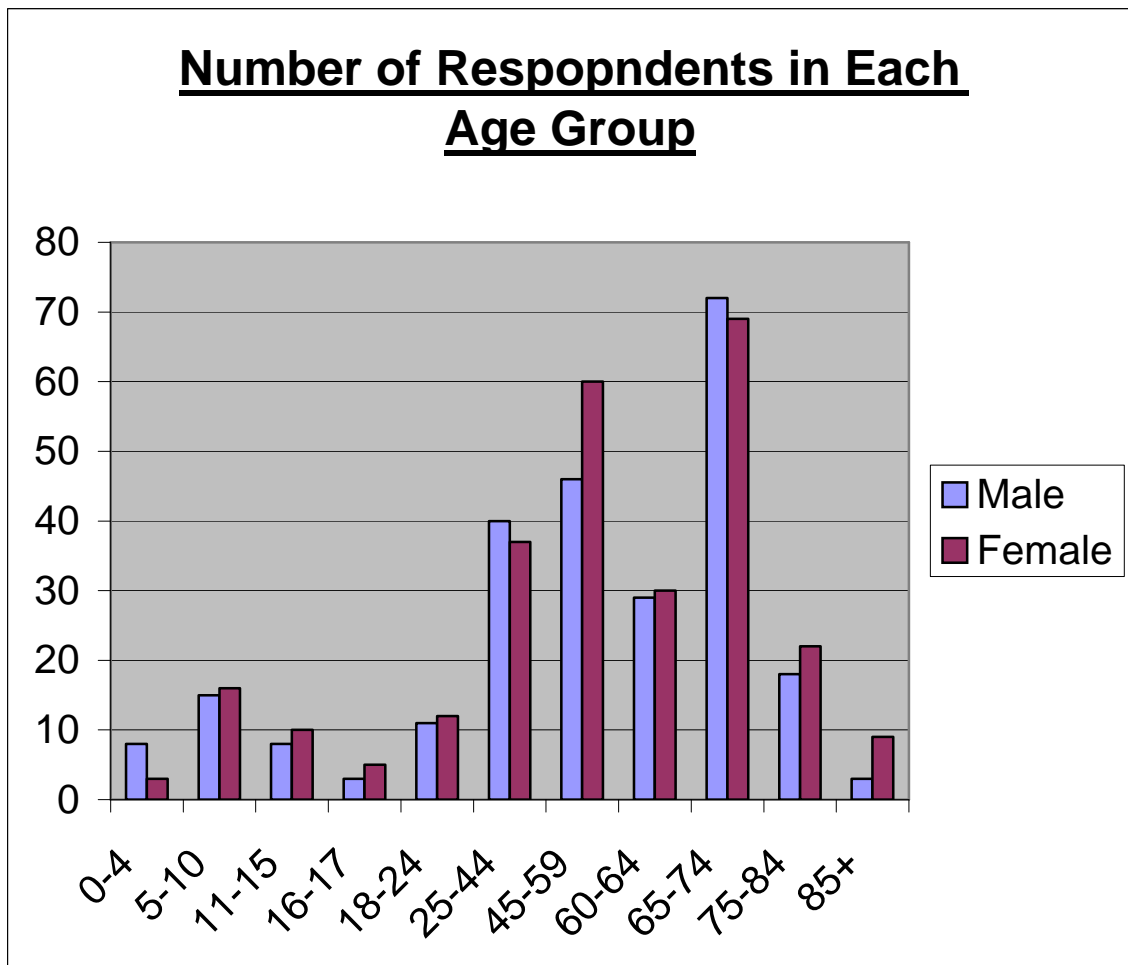
Hutton remains a popular village today, and is regarded as being a very good area to live. Implementation of this Village Plan will help to ensure that over the next decade the village develops appropriately, to the benefit of all who live and work here.

SUMMARY OF CONSULTATION RESULTS

This summary is based on an analysis of all the responses from the household questionnaire together with the results of other consultations held with residents and commercial, public service and voluntary organisations. The full results of all consultation feedback are available from the Clerk of Hutton Parish Council.

The questionnaire was circulated to all households in April 2006 and was completed by 239 households containing 526 people, 75% within the village centre and 25% in the surrounding rural areas. In total 479 people of 11 years of age and over completed the questionnaire (47.8% male and 52.2% female). A tenth of households responding have a registered disabled person living there.

The respondents represent an older population: three quarters are over 45 years old and more than a half are over 60 years of age. Under 18's represent 13% of the population in households responding.



LIVING IN HUTTON

HEALTH, COMMUNICATIONS, SHOPPING AND LEISURE SERVICES

Headlines:

Transport for the elderly and to hospitals is a problem for many

Lack of dental services a real concern

Perceived lack of awareness of local issues by the Borough and County Councils

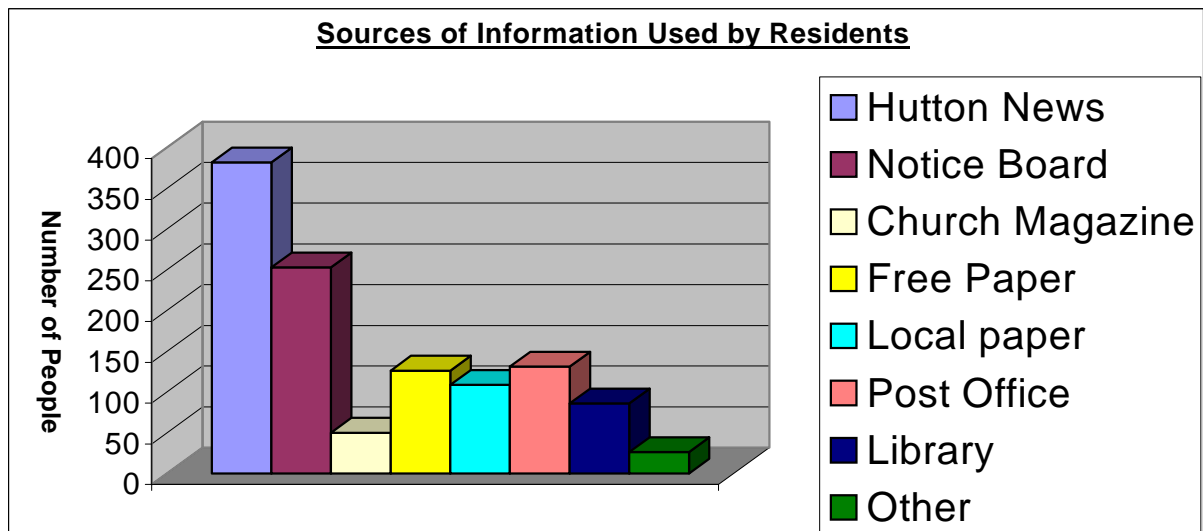
Although the public transport service is acceptable to the majority, some older residents report difficulties and the availability of good links to hospitals at Fulwood and Chorley is a problem for many. The latter bus route has recently been replaced with an on-demand taxi service. It is important that the needs of people without personal transport are kept in mind as changes to the health services take place.

Obtaining the services of a dentist is of great concern to some Hutton residents. From 102 persons responding, 92 (90.2%) state that they have difficulty. This is an area worthy of further research to fully establish the local situation as more dental practitioners leave the NHS and set up in private practices.

Most Hutton residents are registered with doctors at health centres in Longton and Penwortham: there are no unfavourable comments regarding the level of service. A total of 12 persons report having difficulty in obtaining the services of a doctor and 16 persons report regularly having difficulty in getting to the surgery, with 8 occasionally experiencing difficulty.

There is concern that health care provision within the community, in terms of both premises and staff, will need to be expanded to meet increasing demand as local communities grow in size.

Residents have a strong desire to support local shops, which they find convenient, efficient and sociable. The post office service is highly valued and it is of concern that this may be under threat of closure as part of the national reduction in post offices.



In an age of ever increasing technology, greater use could be made by the Parish Council of the Internet as a means of communicating information in future.

The table below shows responses to the question: "Do you feel your elected representatives in local government are sufficiently aware of local concerns and feelings"?

	Fully aware	Quite aware	Not aware	No opinion
Parish Council	175 (41.8%)	144 (34.4%)	38 (9.1%)	59 (14.1%)
District Council	39 (9.3%)	192 (45.8%)	112 (26.7%)	68 (16.2%)
County Council	23 (5.5%)	100 (23.9%)	192 (45.8%)	93 (22.2%)

In general, comments relating to the District (Borough) Council and the County Council relate to perceived failures to take note of objections to planning applications and on environmental health issues.

Improved local information services for councils, travel, benefits advice and citizens advice would be welcomed.



Although the children's playground is well considered, facilities for older children and young people are considered to be poor. A majority of residents do not currently participate in sports activities, but there are indications that many would if provided locally. Similarly, there is an indicated demand for other leisure and educational facilities. The Grammar School is regarded as an important part of the local community, and greater use of its facilities by the public will be pursued. The Village Hall is already well used by a variety of groups and is a possible venue for additional activities. The need for improved facilities within the hall has been identified.

Recommended Actions

Ensure transport services are maintained and improved

Raise issues with dental services

Support retention of post office within Hutton

Continue to produce and enhance use of Parish Council Newsletters

Assess an extension to the Village Hall to provide additional room/toilet facilities

In view of the dramatic increase in the use of the Internet by the public, the Parish Council should carry out further investigations into the use of the Internet as a means of disseminating information to villagers

Continue to lobby District and County Councillors on local issues

Investigate provision of more local sports and leisure facilities

ENVIRONMENT AND PLANNING

Headlines:

Rural environment is highly valued and is to be protected

Dissatisfaction with implementation of planning system

Strong support for environmental improvement measures

Litter a problem in some areas

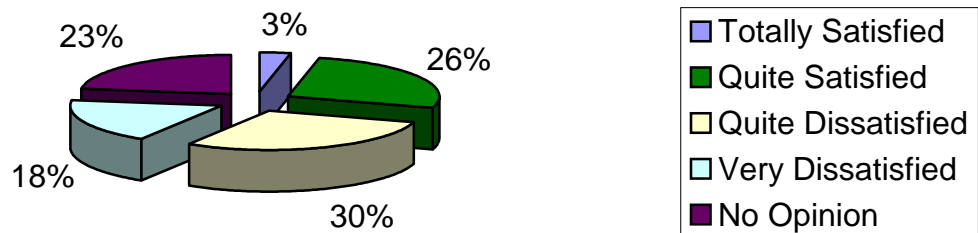
Noise pollution is a significant problem

The rural environment of Hutton and surrounding countryside is much prized by its residents who wish to see these important qualities preserved and enhanced.



There have been developments in Hutton, which have proved controversial for several reasons: such as loss of amenity, demolition of old buildings and traffic problems. This has been a major focus of public interest and Parish Council business in recent years. Planning matters thus generate a large number of responses to the question "What is your opinion of the way the planning system is implemented in Hutton?"

What is your opinion of the way the planning system is implemented in Hutton?



Additionally, more than half the respondents think insufficient publicity is given to planning applications, which affect Hutton.

Planning issues clearly require good communication, publicity, and consultation to obtain balanced and informed opinion and to ensure that all concerned are fully involved.

Measures to protect and enhance the environment are well supported: recycling, energy saving, improved public transport and traffic reduction are high on peoples' priorities. Community composting, improved rights of way and car sharing schemes would also be welcomed by many.



There are several ongoing initiatives in the village to enhance open space areas including the village pond area and other village centre improvements.

About half the respondents consider litter to be a problem, particularly around the Village Hall and Recreation Ground and around the Anchor Inn and Hutton Grammar School.

There is little doubt that the employment by the Parish Council, in conjunction with Longton and New Longton, of a part time 'Village Lengthsman', ensures that the problem of litter, and other necessary repair work around the village, is dealt with expeditiously, and keeps Hutton tidy. This reduces the workload of the Borough and County Councils and it is essential that the County Council maintains its financial support for the project.

Traffic and low flying aircraft are regarded as the main sources of noise pollution affecting the village. The traffic noise results from vehicles within the village centre and from the high-speed traffic on the bypass, which is acute during braking and acceleration at the Anchor roundabout. 27% of respondents report being adversely affected by noise from motorcycle scrambling.

Low flying military aircraft pass over Hutton from Bae Systems airfield at Warton and overhead air traffic on the approach to Blackpool airport has increased recently. This is likely to be an issue for the wider geographical area rather than Hutton alone.

Recommended Actions:

Ensure potentially controversial planning matters are widely consulted on

Liaise with SRBC on enhancements to environmental services

Engage with Hutton Grammar School regarding litter problem

Approach highway authority to consider noise-reduction measures on bypass

Monitor aircraft noise issues and join in local area initiatives to improve situation

Continue to advance open space improvement initiatives

HOUSING

Headlines:

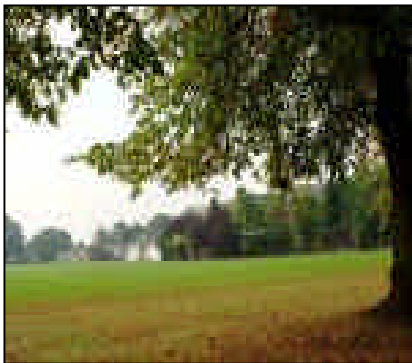
Demand for small scale sheltered housing scheme.

General opposition to new development

The 2001 National Census showed the population of Hutton as occupying 1018 houses. At that time 50.6% of residents owned their houses outright, 40.8% owned their house under a mortgage agreement, 0.7% rented from a housing association, and 2.3% rented privately. Since then approximately 120 additional houses have been built.

Over half the respondents are over the age of 60 and more than a third indicate that Hutton needs sheltered housing provision. A significant number identify a need for homes for people with disabilities.

This, taken together with the indication that price is the most significant problem for those seeking fresh accommodation, reinforces the current initiative with New Progress Housing to provide 8 units for sheltered accommodation off Greenacres.



There is widespread resistance to further new development in the village, especially on green field sites. It is clear from the various consultations carried out that villagers are keen to retain the existing character and heritage of Hutton. There is a widely held view that too many executive-style homes have been built and that further development should be limited to conversions or very small infill-type plots. Dwellings on such sites should be affordable in nature to assist young, old, single people to remain in the village.

Recommended Actions:

Progress existing initiative for sheltered housing on Greenacres

Review the requirements for further sheltered housing provision following the completion of the currently proposed 8 units

Liaise with SRBC on scale and type of housing required in Hutton to be included in the currently progressing Local Development Framework and with LCC in future Structure Plans

CRIME, ANTI-SOCIAL BEHAVIOUR AND EMERGENCY SERVICES

Headlines:

Concerns about vandalism and street crimes and behaviour

Perceived view that local police could be more involved with community

Demand for more Neighbourhood Watch schemes to be confirmed

Despite Hutton being a small semi-rural village, residents indicate clear concerns about crime and anti-social behaviour. Over half the questionnaire respondents think vandalism is an issue, whilst theft (31%) and drunkenness (22%) are also of concern. About 10% of people mention fear of mugging.



In reality, crime levels in Hutton in recent times have been low and restricted to minor theft, vandalism and some anti-social behaviour. The perceived risks are, however, very evident and a greater police presence (desired by about 50% of respondents) and other measures such as improved activities for young people (47%), drug and alcohol education (20%), CCTV (17%) and improved street lighting (17%) may help. The latter is particularly identified as a need at the eastern end of Lindle Lane (possibly on the grounds of road safety rather than crime prevention).

The majority think that the service provided by the police in Hutton is good or reasonable, but about 20% want to see better consultation with local people.

Neighbourhood Watch schemes generate a variance of opinion: about a quarter already participate, but the remainder are equally divided between wanting to be involved in a scheme, being against or having no opinion. Ironically, when asked "Do you think a Neighbourhood Watch Scheme is needed?" only 6% answer "Yes". This seeming contradiction requires further investigation. There are currently five active schemes operating in Hutton.

Only a tiny minority express dissatisfaction with the fire and ambulance services; fortunately many can say they have not used them!

The Headquarters of the Lancashire Constabulary is located at Hutton and is a major local employer.

Recommended Actions:

Work with local police to develop community involvement

Promote need for improved activities for young people

Discuss street lighting improvements with relevant authorities

Investigate support for widening Neighbourhood Watch schemes

TRAFFIC

Headlines:

Congestion and safety risks due to parking around Grammar School

Speeding traffic

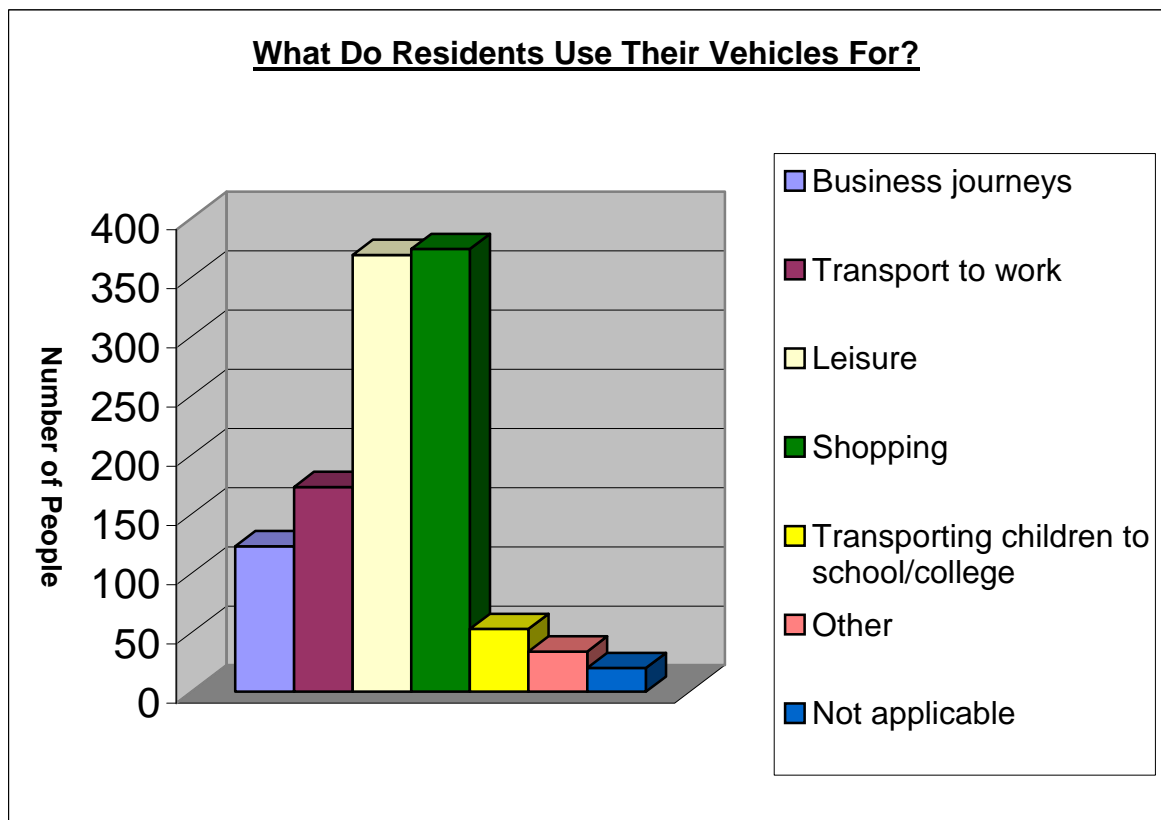
Improvements required to footways and cycleways

Demand for Penwortham Bypass Extension

Problems from lorry traffic

Poor lighting in some areas

Analysis of the questionnaires showed that 95% of respondents had access to a motor vehicle. The purpose for which vehicles are utilised is illustrated in the graph below.



Concerns about highway safety are raised by a majority of the respondents. These concerns relate to specific issues or areas, which are regarded as serious, but also to more general matters of concern throughout the village, such as lorry traffic.

Two thirds of respondents consider that there are major danger spots on the roads in Hutton and 95% would support action to improve road safety. A majority want proper enforcement of speed limits and about 20% would support each of the following measures: lowered speed limits, improved road signing and traffic calming.



Car parking associated with the Grammar School is a major concern of villagers, expressed both in the questionnaire and by further consultations at the Mayday Fete and the Autumn Social Evening. The current main concern is safety and congestion for road users on Liverpool Road and inconvenience to householders directly affected by the parked cars.

All consultations also indicate speeding traffic to be a real concern to residents in terms of safety and quality of life. This is considered to be a problem generally within the village and specifically on Liverpool Road and in Lindle Lane.

Other areas of specific concern arising from the question on danger spots are parking on Anchor Drive making access difficult for residents, service vehicles and emergency service vehicles and parked vehicles creating hazardous situations at the junctions of Liverpool Road with Tolsey Drive, Stiles Avenue and Skip Lane. These are concerns that the Parish Council has taken up already with Lancashire County Council.

Over 80% of respondents feel that facilities for pedestrians are good or reasonable. Nevertheless, comments indicate a need for improvements to some footways in the village: for instance widening of parts of the Liverpool Road footway and provision of dropped kerbs at some locations. A quarter of respondents would like to see pedestrian crossings introduced in such areas as the Anchor Inn, Grammar School, and outside the Post Office. Street lighting improvements are also called for by some.



Congestion on the A59 into Penwortham and on Liverpool Road approaching the Anchor Roundabout has been a problem for many years and has latterly become very much worse as a result of the highway scheme in Penwortham and general traffic growth. There is also significant queuing at peak times on Lindle Lane and on Pope Lane. There is strong support for the provision of the final part of Penwortham Bypass to alleviate these problems.

Hutton has some dedicated cycle paths and lanes, and most people regard the facilities for cyclists as good or reasonable. A third of respondents would like to see more cycle paths developed. There is concern about safety at the pedestrian and cycle crossing of the dual carriageway at the end of Moor Lane which is used daily by school children; this matter has been included for attention in the Parish Business Plan. A fatal accident in December 2006 emphasises the urgent need for action.

Pedestrian safety is also an issue near the roundabout at the junction of Pope Lane and Penwortham Way (A582), just on the Penwortham side of the parish boundary.

Recommended Actions:

Carry out immediate liaison with the school, police and highway authority to mitigate the safety risks and concerns of the public from parking around Hutton Grammar School

Progress safety improvements for pedestrians and cyclists at busy road crossings

Pursue better enforcement/physical measures to reduce speeding problem with Police and Highway Authority

Identify where improvements for pedestrians can reasonably be achieved and pursue with Highway Authority

Identify possible improvements to cycleways and liaise with Cycle Officer at Highway Authority

Lobby the County Council, possibly in conjunction with Penwortham Town Council and Longton and New Longton Parish Council, to include the Penwortham Bypass extension in current programme.

Identify particular roads and types of lorry traffic to see if any improvement can be achieved in conjunction with Highway Authority and possibly local firms etc

Identify specific areas of concern and liaise with Lighting Section of Highway Authority

Advise and liaise with Penwortham Town Council re pedestrian safety concerns at Pope Lane/Penwortham Way



A59, Lindle Lane, Police HQ, Anchor Roundabout, Anchor Estate

ACTION PLAN

HEALTH, COMMUNICATIONS, SHOPPING AND LEISURE SERVICES

Objective	Action	Partners	Timescale	Comments
To ensure that a variety of quality adult education and leisure courses are available to residents	Work in partnership with local colleges and HGS to seek provision of facilities in Hutton	HPC HGS LCC Local colleges	Investigate feasibility in 2007 for implementation as soon as possible	
To ensure that a wider variety of sports facilities are available in Hutton	Work in partnership with SRBC, HVHC HGS and others to seek new sports facilities	HPC HGS HVHC SRBC Others as required	Investigate feasibility in 2007 for implementation as soon as possible	
To improve availability of activities for young people	Carry out detailed Survey of need and follow up with Partners	HPC HVHC	Survey in 2007 for implementation as soon as possible	

HOUSING

Objective	Action	Partners	Timescale	Comments
To provide sheltered housing	Progress current proposal off Greenacres. Monitor further need	HPC LCC New Progress Housing	Ongoing	

CRIME, ANTI-SOCIAL BEHAVIOUR AND EMERGENCY SERVICES

Objective	Action	Partners	Timescale	Comments
To further develop community involvement with police	Monitor PACT programme and develop other initiatives as appropriate	HPC Police	Ongoing	
To widen Neighbourhood Watch Schemes if required	Carry out detailed Survey to ascertain need for further schemes	HPC Police	Survey during 2007	

ACTION PLAN

ENVIRONMENT AND PLANNING

Objective	Action	Partners	Timescale	Comments
To improve environmental services	Liaise with LCC, SRBC and others to provide more measures to protect and improve the environment	HPC LCC SRBC Others as required	Consultation to commence in 2007 for implementation as soon as possible	
To improve the visual and amenity value of the village centre	Investigate schemes for better parking and green planting in front of the village shops as already identified by HPC	HPC SRBC LCC Shop owners and tenants	Long-term but continue ongoing consultations	
To improve the amenity value of the village pond, village hall forecourt and recreation ground	Progress improvements to pond and surroundings as already being developed by "Ponds for People" project	HPC SRBC HVHC	Ongoing. Complete within 1 year if possible	These projects are already partly funded
To reduce litter problem	Liaise with HGS and others to develop initiatives to tackle problem	HPC HGS SRBC	Ongoing	
To reduce noise pollution from aircraft	Liaise with other organisations in the area to monitor the problem	HPC Other Parish Councils	Long-term as required	
To ensure local concerns are considered in future planning strategies	Work with SRBC and LCC to ensure timely consultations when future planning strategies are developed	HPC SRBC LCC	As required	

ACTION PLAN

TRAFFIC

Objective	Action	Partners	Timescale	Comments
To ensure local concerns are fully considered regarding planning matters	Liaise with SRBC to achieve improvements	HPC SRBC	Ongoing	Maintain existing liaison with SRBC Planning Department
To mitigate safety risks and congestion from parking around HGS	Liaise with HGS and others to develop measures to reduce problems	HPC HGS LCC Police	Ongoing	
To reduce risks to pedestrians and cyclists at busy road crossings	Develop Improvement schemes on A59 and at Pope Lane	HPC LCC Police PTC	Ongoing	
To improve pedestrian facilities, including widening footways, crossing points and dropped kerbs at junctions	Liaise with LCC to carry out improvements in identified areas	HPC LCC	Commence liaison in 2007 for implementation as soon as possible	
To improve provisions for cyclists	Liaise with LCC to carry out improvements where possible	HPC LCC	Commence liaison in 2007 for implementation as soon as possible	
To complete Penwortham bypass	Lobby LCC to include Bypass in programme	HPC LCC PTC L/NL PC	Long term	Contact to be made with neighbouring parishes to form lobbying strategy
To reduce problems with lorry traffic in village	Identify areas of concern and liaise with LCC and SRBC to consider improvements where possible	HPC LCC SRBC	Long term	Raise issues with LCC as part of ongoing liaison re highways issues
To reduce noise pollution from traffic	Liaise with LCC to investigate noise reduction measures	HPC LCC	Commence liaison in 2007 for implementation as soon as possible	
To improve street lighting and amenity lighting	Investigate possible areas for improvement with SRBC, LCC and HVHC	HPC SRBC LCC HVHC	Start in 2007 for implementation as soon as possible	

ACTION PLAN

Key

HPC	Hutton Parish Council
SRBC	South Ribble Borough Council
LCC	Lancashire County Council
HGS	Hutton Grammar School
HVHC	Hutton Village Hall Committee
L/NLPC	Longton/New Longton Parish Council
PTC	Penwortham Town Council
SPID	Speed Indicator Device
PACT	police and Communities Together

HUTTON VILLAGE PLAN STEERING GROUP AND VOLUNTEERS

Steering Group

Wendy Barker		
Frank Crankshaw		
Lynn Hamer	(Treasurer)	(Hutton Parish Clerk)
Viv Hastewell	(Secretary)	
Bill Jopson		
David Mander	(Chairman)	
Cllr. Roger Mitchell		(Chairman. Hutton Parish Council)
Cllr Dave Parkes	(Vice Chairman)	(Vice Chairman. Hutton Parish Council)

Volunteers

The Steering Group thank the following Hutton Residents, and the various organisations, for the assistance provided in many ways. It has been greatly appreciated and without it this project could not have been completed.

John and Dorothy Andrews	Cllr David Barton
Philip Barker	Bill Crossley
Brenda Crossley	Mark Chappelhow of (Community Futures)
Vivienne Crankshaw	Dennis Edwards
Mr & Mrs Dowson	Dr Tony & Mrs Fishwick
Margaret Fisher	Grimsargh Village Plan Committee
Cllr George Gilbert	Tom Hastewell
Robert Hamer	Jean Howard
Cllr John Hesketh	Hutton Village Hall Committee
Hutton Post Office	Brenda Kipling
Jill Jopson	Lancashire County Council
Bob Kipling	Doreen Mitchell
Gwynneth Mander	Alan Pinder
Mary Parkes	South Ribble Borough Council
Geoff Smith.	Tarleton Village Plan Committee
South Ribble Western Parishes Area Committee.	Thoroughgoods News Agents

and anyone else who has helped in any way